

Re-Inventing Technology
Peter Rosenfeld

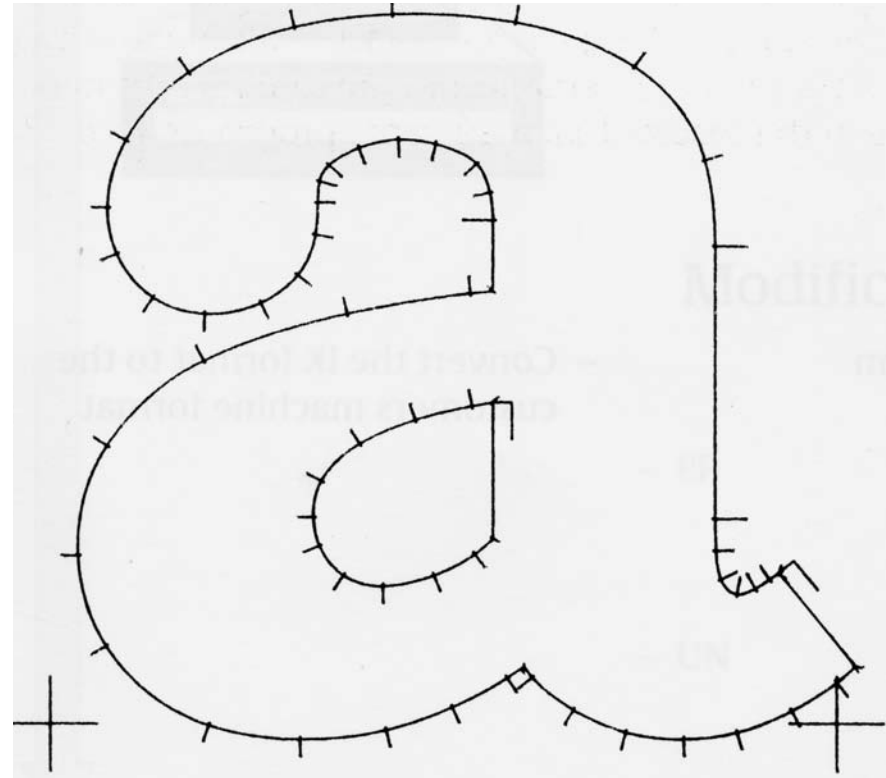
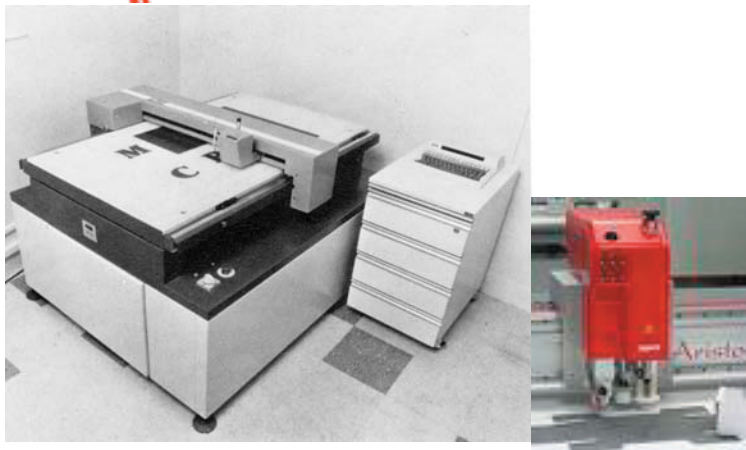
IKARUS



Dr. Peter Karow



AIR/ISTO





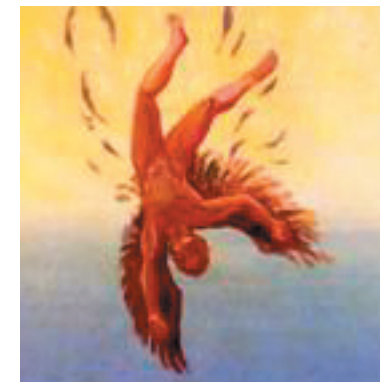
IKARUS Philosophy

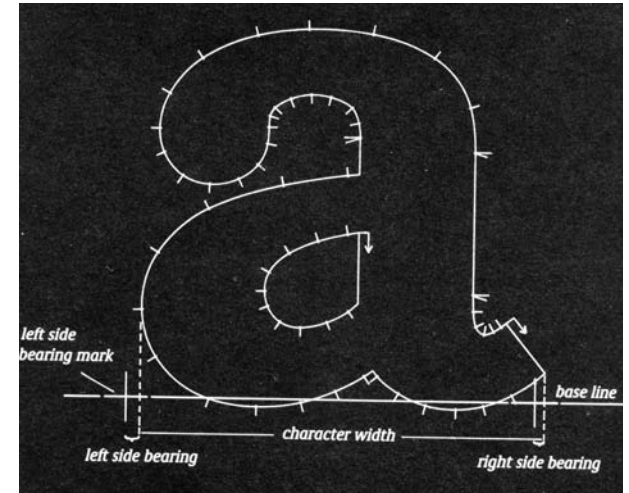
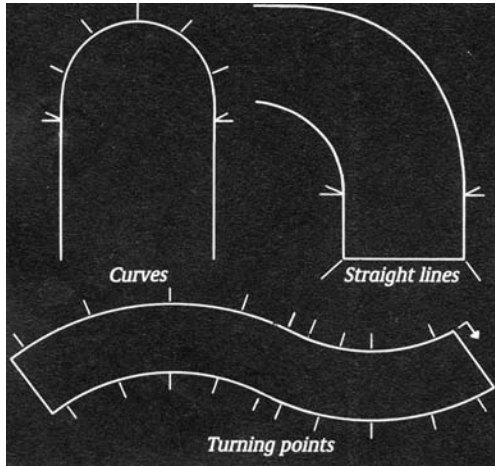
Productivity

Effectiveness

High Quality

Icarus crashed into the sea on his escape from Crete (Greek island). He'd fly too close to the sun with 'wax-glued' wings.





Advantages

Good Database Format

Easy Data Input

Minimal Storage Requirements

Easy Editing

Very High Accuracy

Perfect Soft-Scanning

Perfect Modifications

Suited for all Output Devices

Batch and Interaction

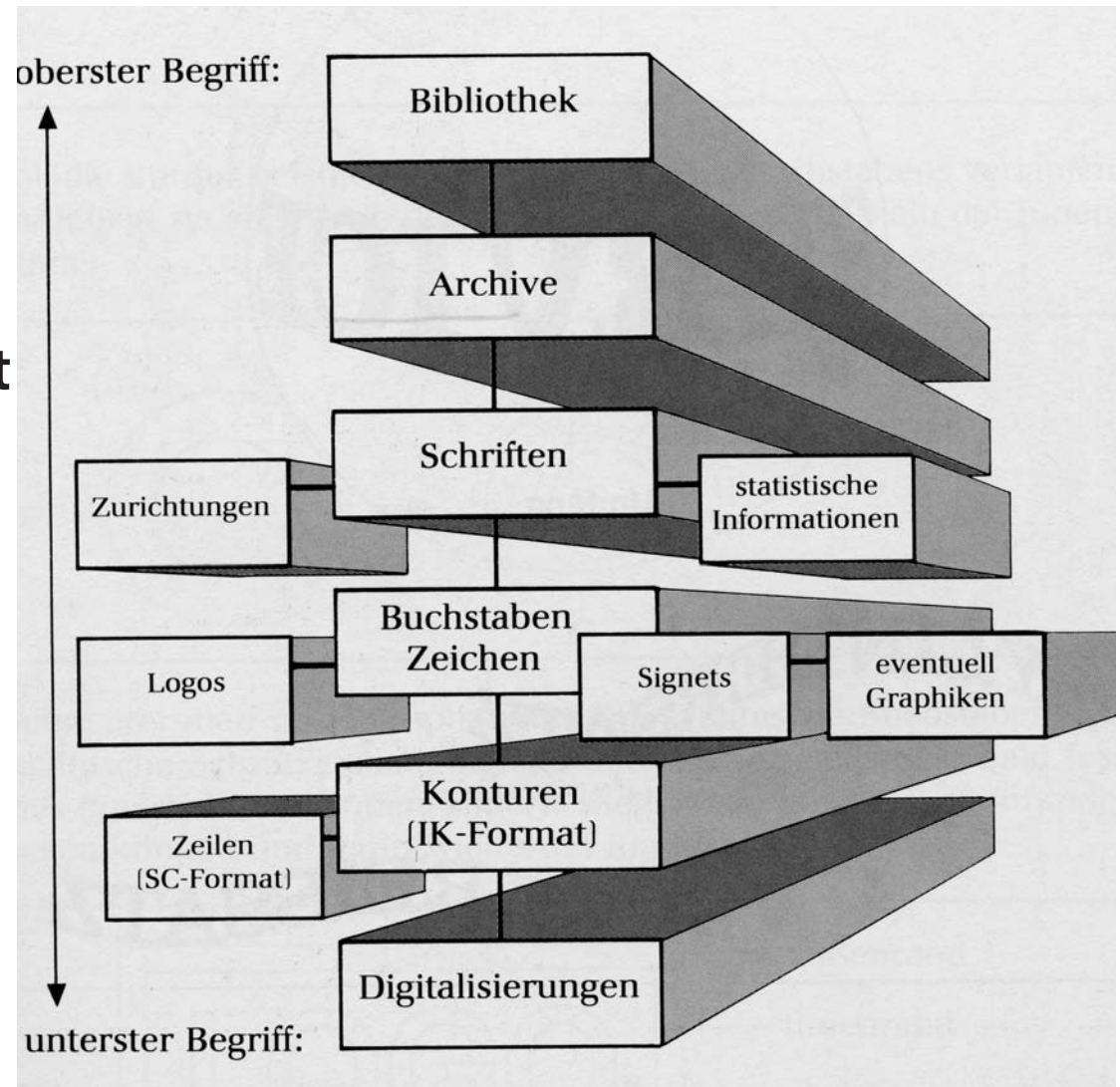
Automatic Digitizing

Good Database Format

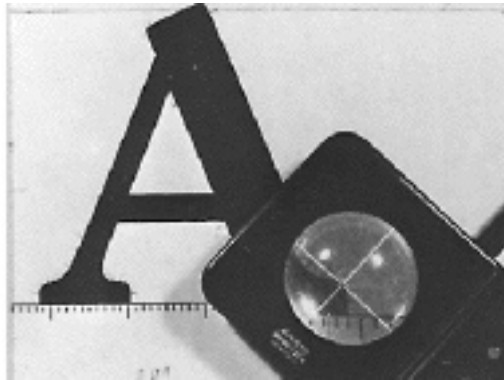
uni(que) code for each glyph

two-byte encoding

IK easy to convert to other formats



Easy Data Input



analog artwork

manual marking

hand-digitization

proofing on drafting machine



numerical input of corrections

screen proof

no autotracing for fonts

first interactive outline editor

Minimal Data Storage

256 KB RAM / 10 MB Disc

IK typeface: 200 glyphs / 20 KB

CJK: 20.000 glyphs / 10 MB



Axel Stoltenberg

Easy Editing



| | | | | | | | | | |
|----|--------|--------------|------------|------|------|----------|-----------|-------------|------------|
| A: | 0 | FONT DISPLAY | PREVIOUS | NEXT | SAVE | ORIGINAL | LSB: 1128 | YMIN: 0 | IK: 12 |
| T: | bw1.sk | BACKGROUND | SAVE COMP: | AUTO | SEMI | MANUAL | N: 7288 | YMAX: 11309 | DN: 2 |
| C: | 0:232 | | | | | | RSB: 300 | TOTN: 8716 | 9349/ 5206 |

| | | | |
|------------|----------|--|--|
| SEPARATION | | | |
| snf | ek: Fill | | |
| X | | | |
| T | | | |
| I | | | |
| P | | | |
| L | | | |
| Automatic | | | |
| Info | | | |

| | | | |
|------|-------|------|----|
| p | co | cg | ch |
| EDIT | IMPRO | MOD | KA |
| | INST | SPEC | |

| | | | |
|--------------|-------------|--------------|---|
| EDIT | | | |
| quick | | undo | |
| delete | insert | change label | |
| shift | shift hor. | shift ver. | |
| shift smooth | quick on co | adj to guide | |
| merge | copy | channelize | |
| scale | rotate | mirror | |
| fit | merge corp. | hidden lines | |
| sidebearings | text | typ. header | |
| store 1 | 2 | 3 | 4 |
| 5 | 6 | 7 | 8 |
| 9 | 10 | | |
| paste 1 | 2 | 3 | 4 |
| 5 | 6 | 7 | 8 |
| 9 | 10 | | |

| | | | |
|-----------|-----------|---------|----------|
| DISPLAY | | | |
| reset | zoom + | zoom - | setup |
| measure | marks | numbers | coords |
| fill | penk | compare | shift bg |
| flat curv | inflect. | steas | hide co |
| guides | cp guides | move | edit |
| H guides | V guides | grid | copy bg |

A large workspace showing a stylized letter 'L' with pink dimension lines. The vertical stem is labeled '1047,0' and the horizontal base is labeled '945,0'. A smaller version of the letter is shown above with a dimension of '2293,0'. The workspace also contains a cursor and a small square icon.

Very High Accuracy

15.000 x 15.000 units

artwork: 100 mm

accuracy: 1/100 mm

Text



Display



Poster

Re-Inventing Technology
Peter Rosenfeld



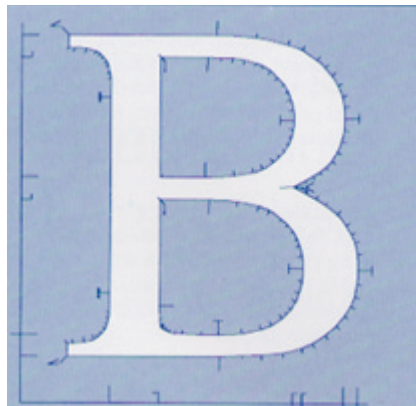
Albert-Jan Pool, Peter Karow
at Didot Seminar at URW,
1992

Rendering / Hinting

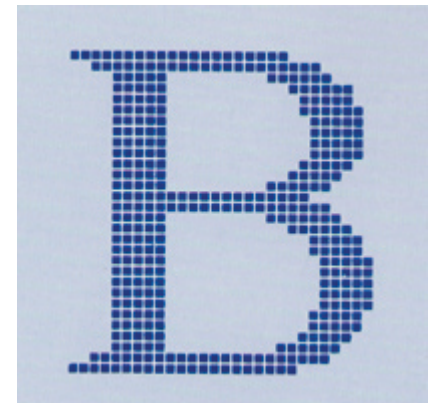
Passe



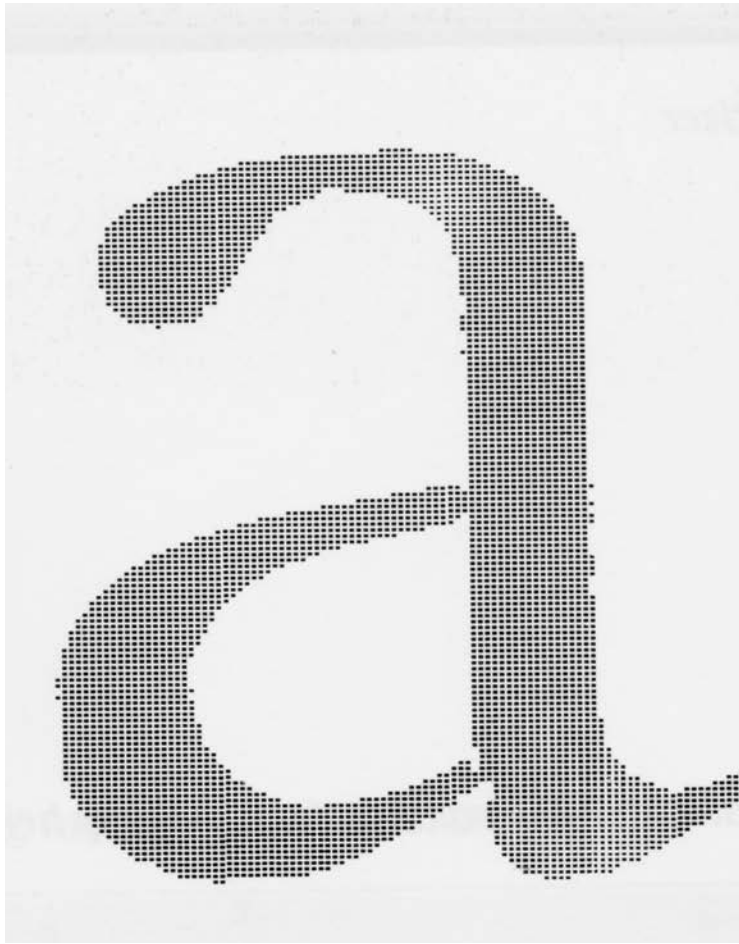
Hinting



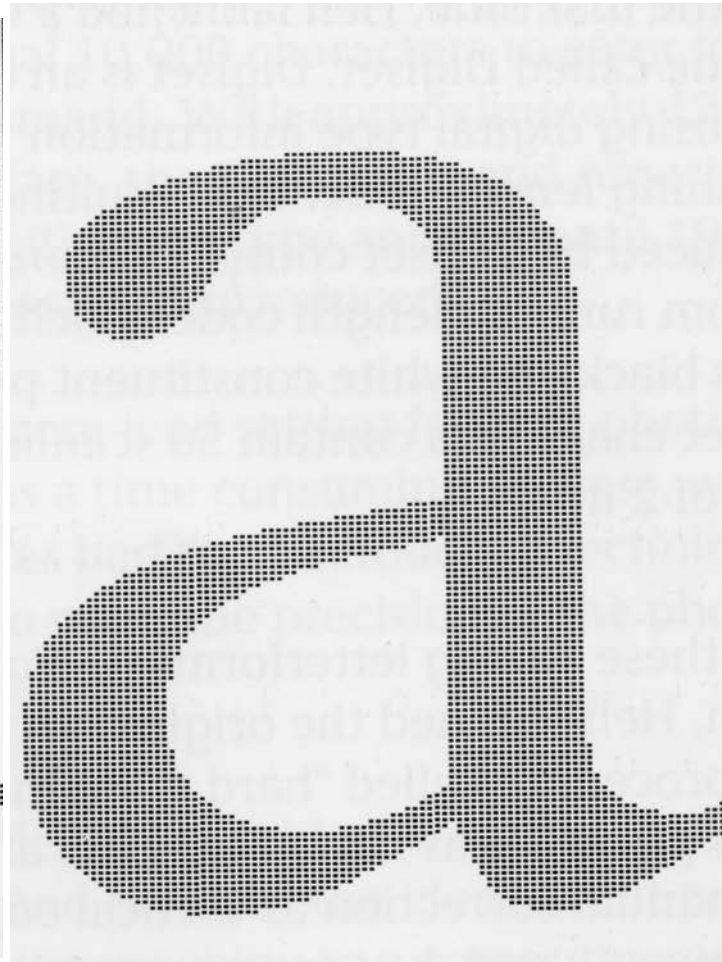
IK -> SC



Hardscanning

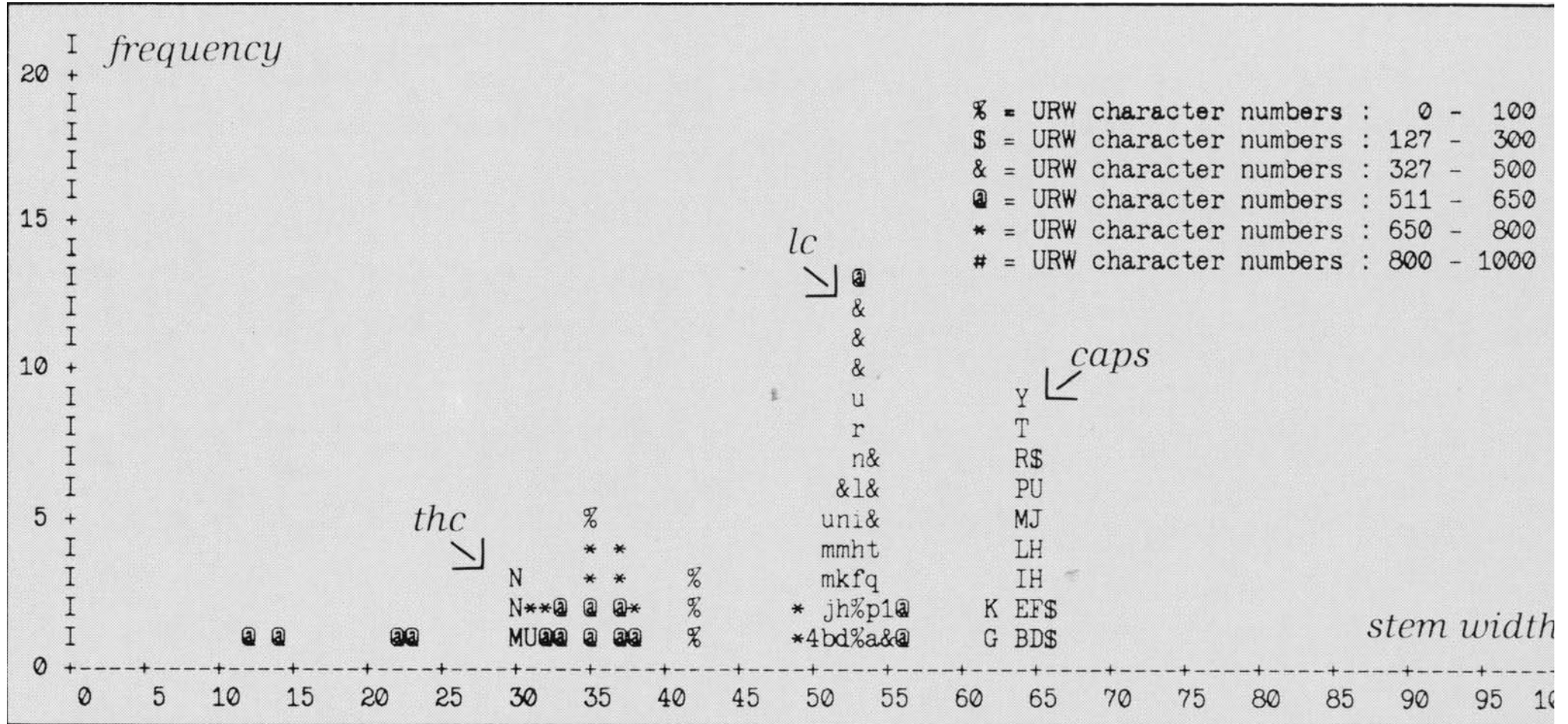


Softscanning by IKARUS

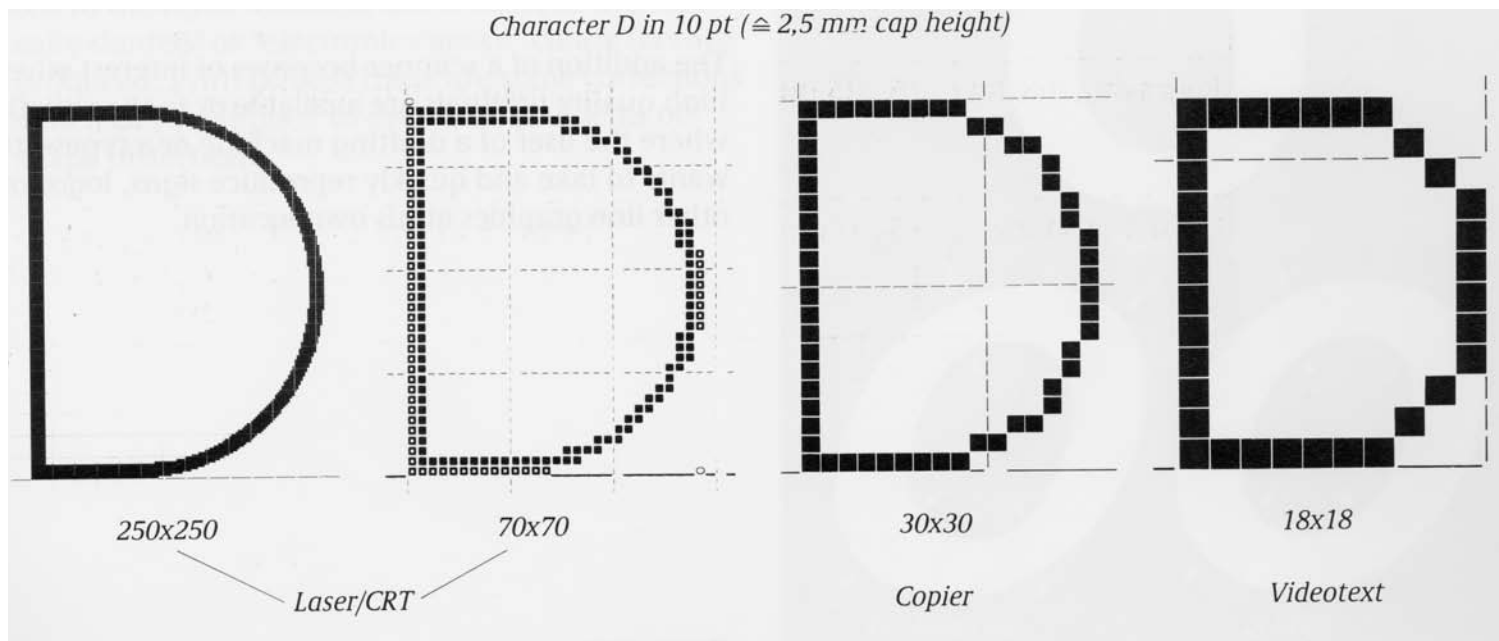


Pattern Recognition (Passe Program)





Measurement of Typeface


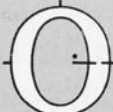
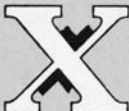
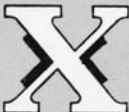


Re-Inventing Technology
Peter Rosenfeld

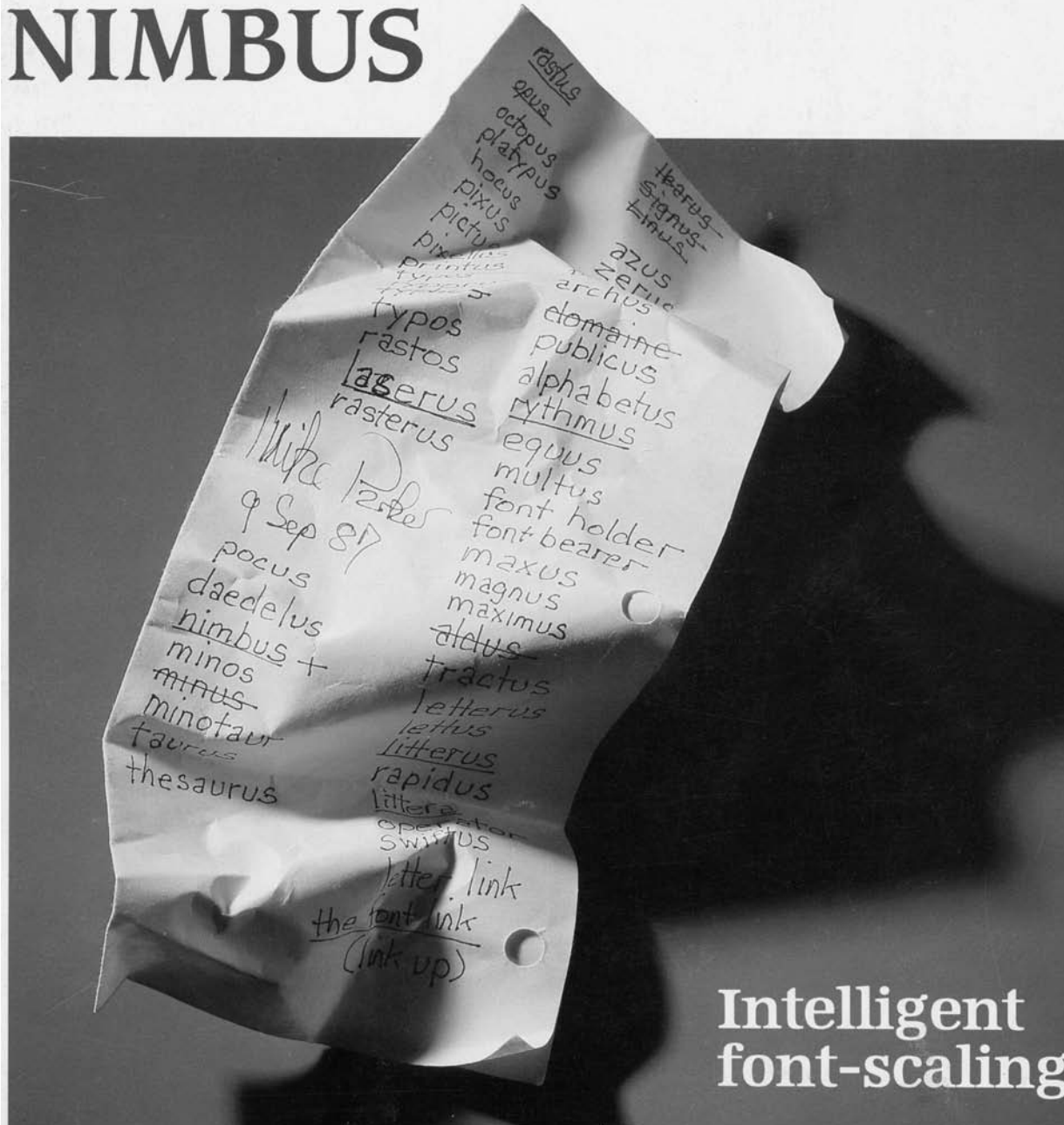


Descriptive Elements

- Vertical straight stems 
- Horizontal straight stems 
- Vertical curved stems 
- Horizontal curved stems 

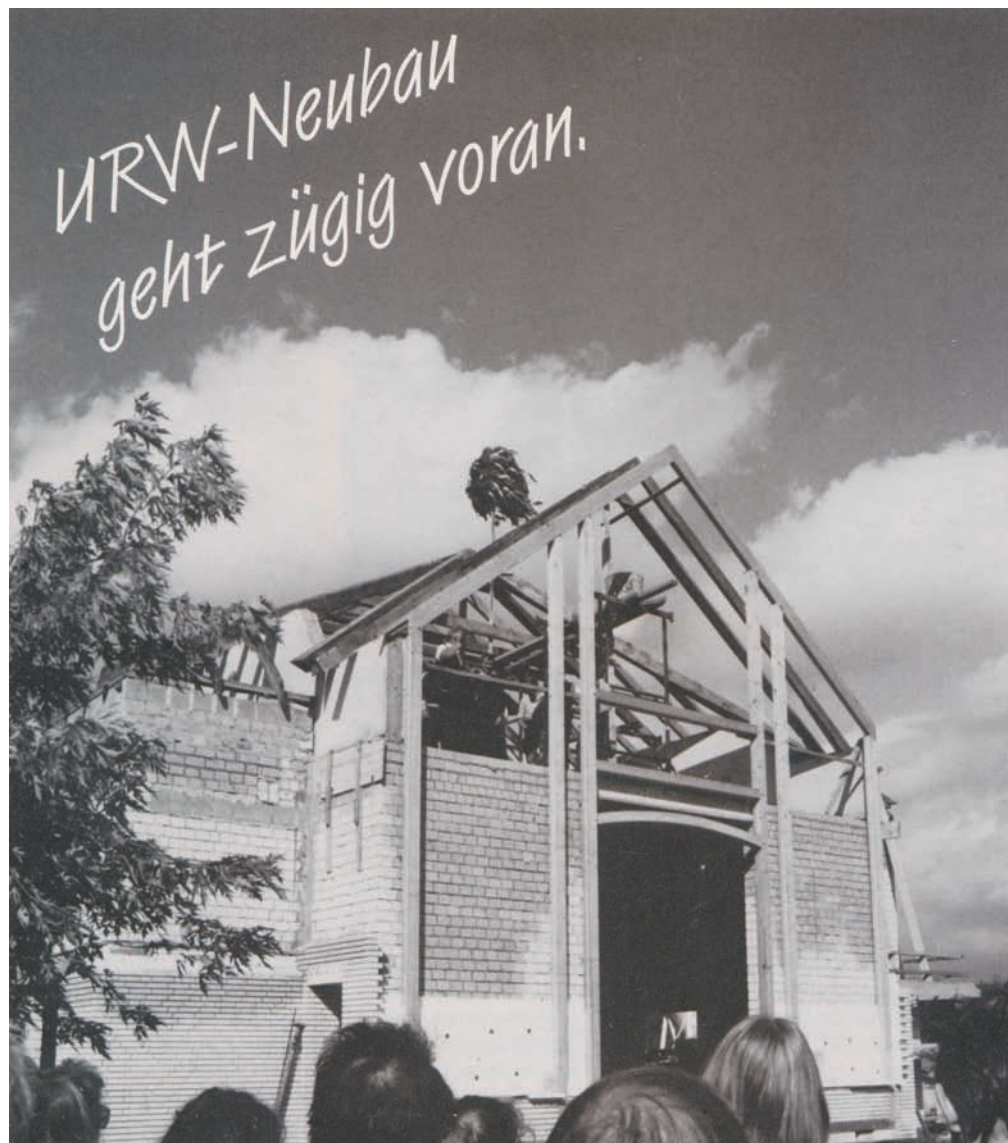
- Half-serifs
(defined by start and end) 
- Start and end of curves
Extrema of curves 
- Vertical peaks 
- Horizontal peaks 

NIMBUS



Mike Parker

Re-Inventing Technology
Peter Rosenfeld





Perfect Modifications

Any Size

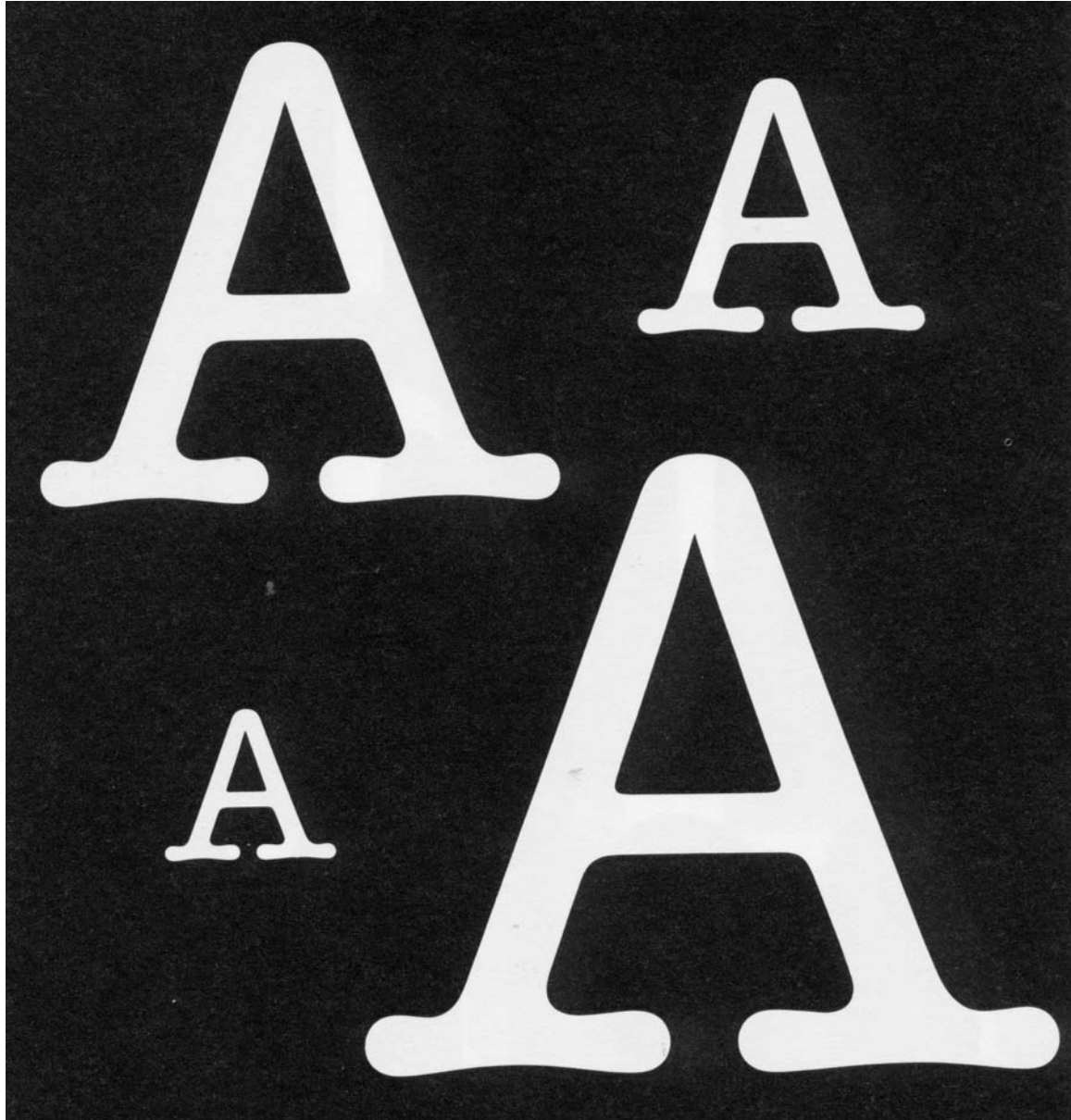
Italicizing

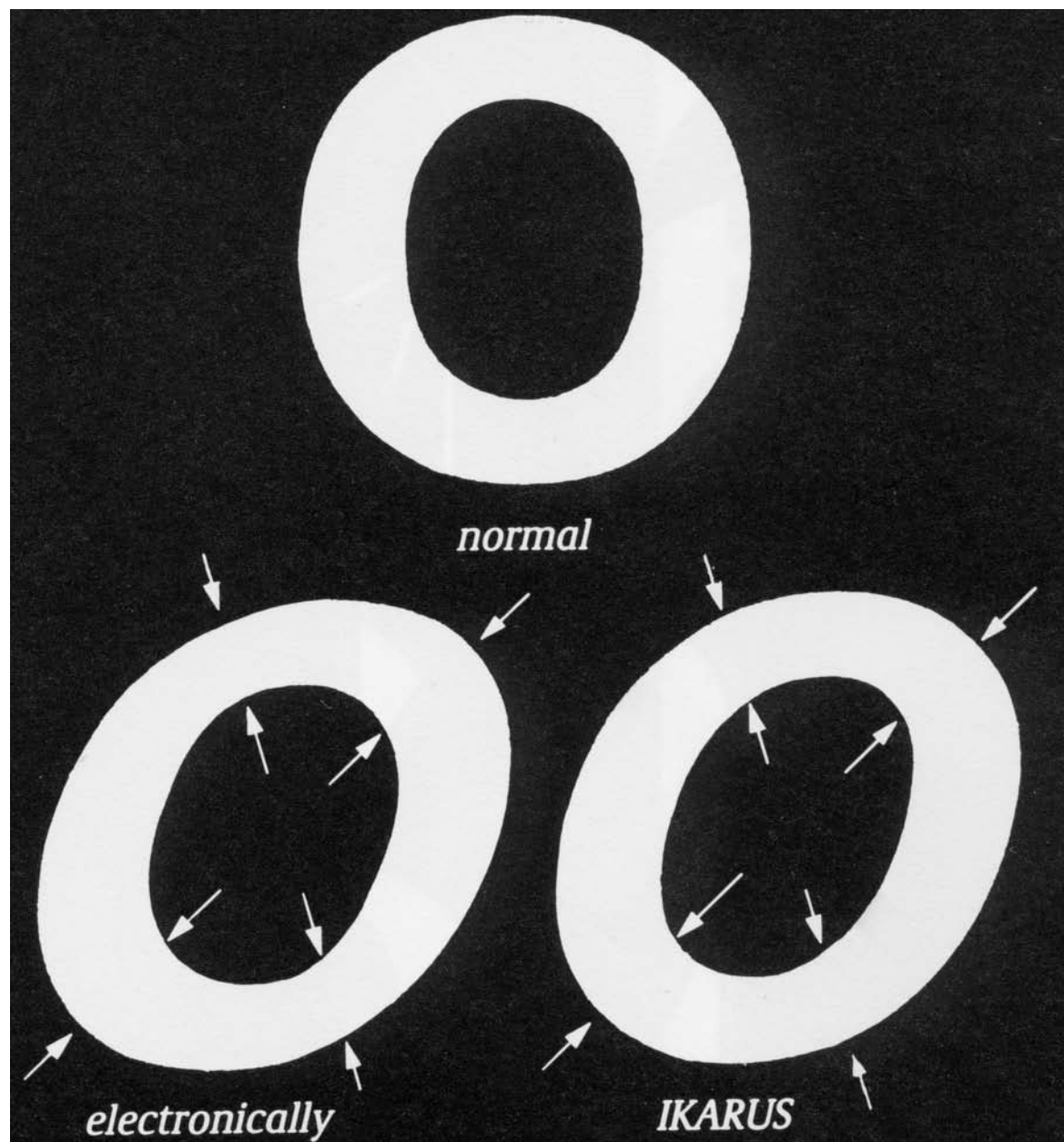
Expanding / Condensing

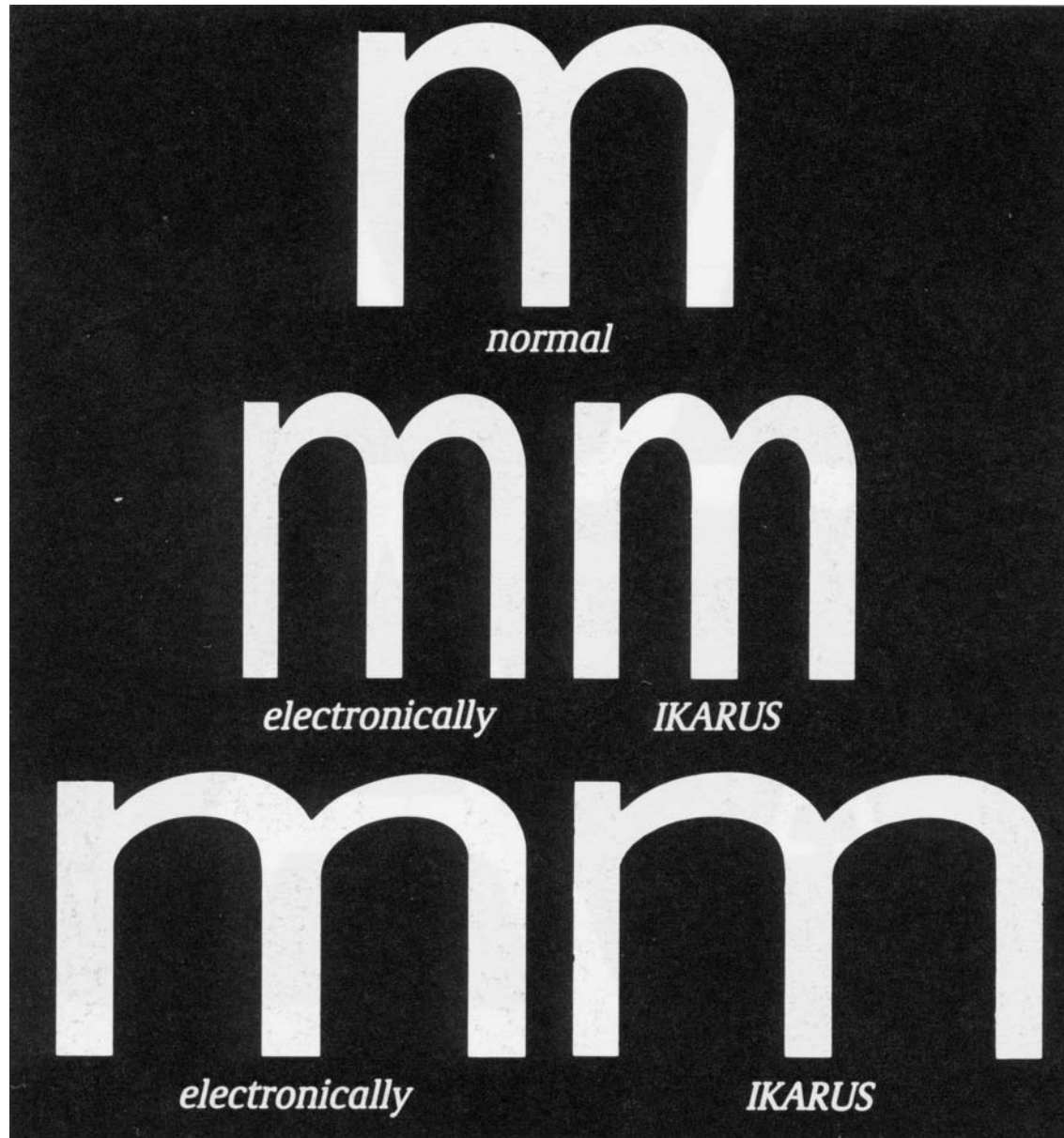
Interpolation

Outline, Inline

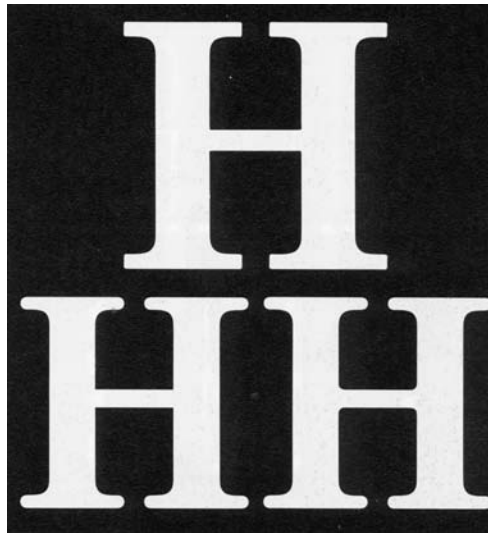
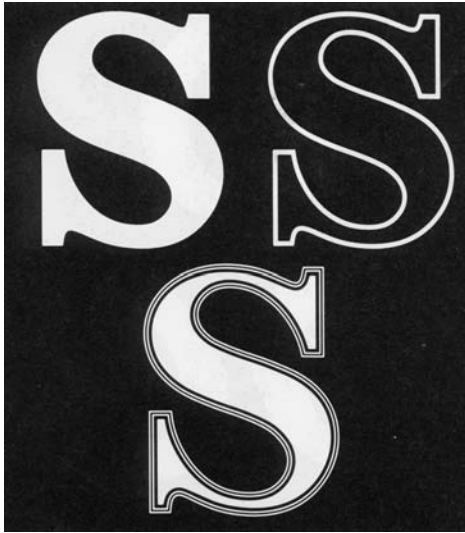
Contour, Round, Shadow



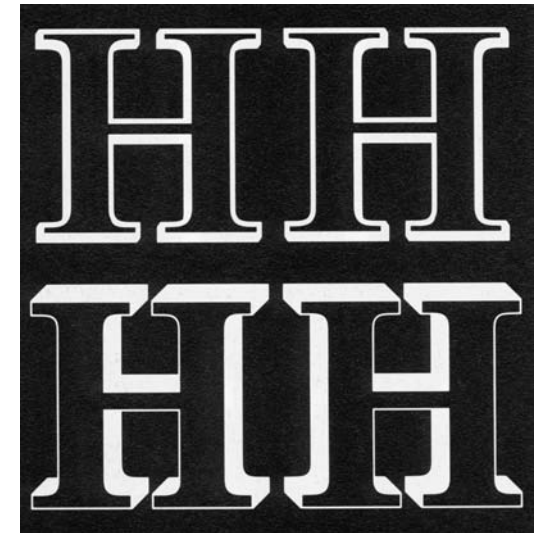


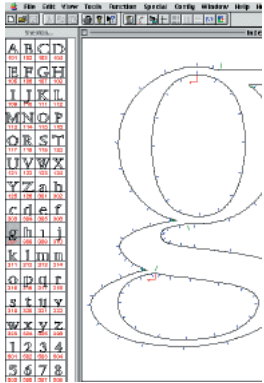






Gu Jun





All Output Formats

IK -> DI

IK -> BE

IK -> VE

IK -> QB

IK -> SC

IK -> BI



Hartmut Schwarz

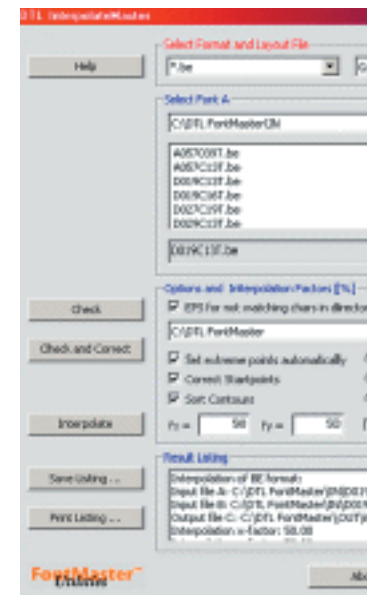
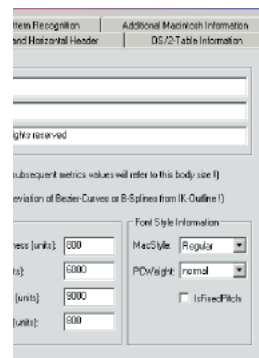
Batch and Interaction

Alignments

Serifs

Stems

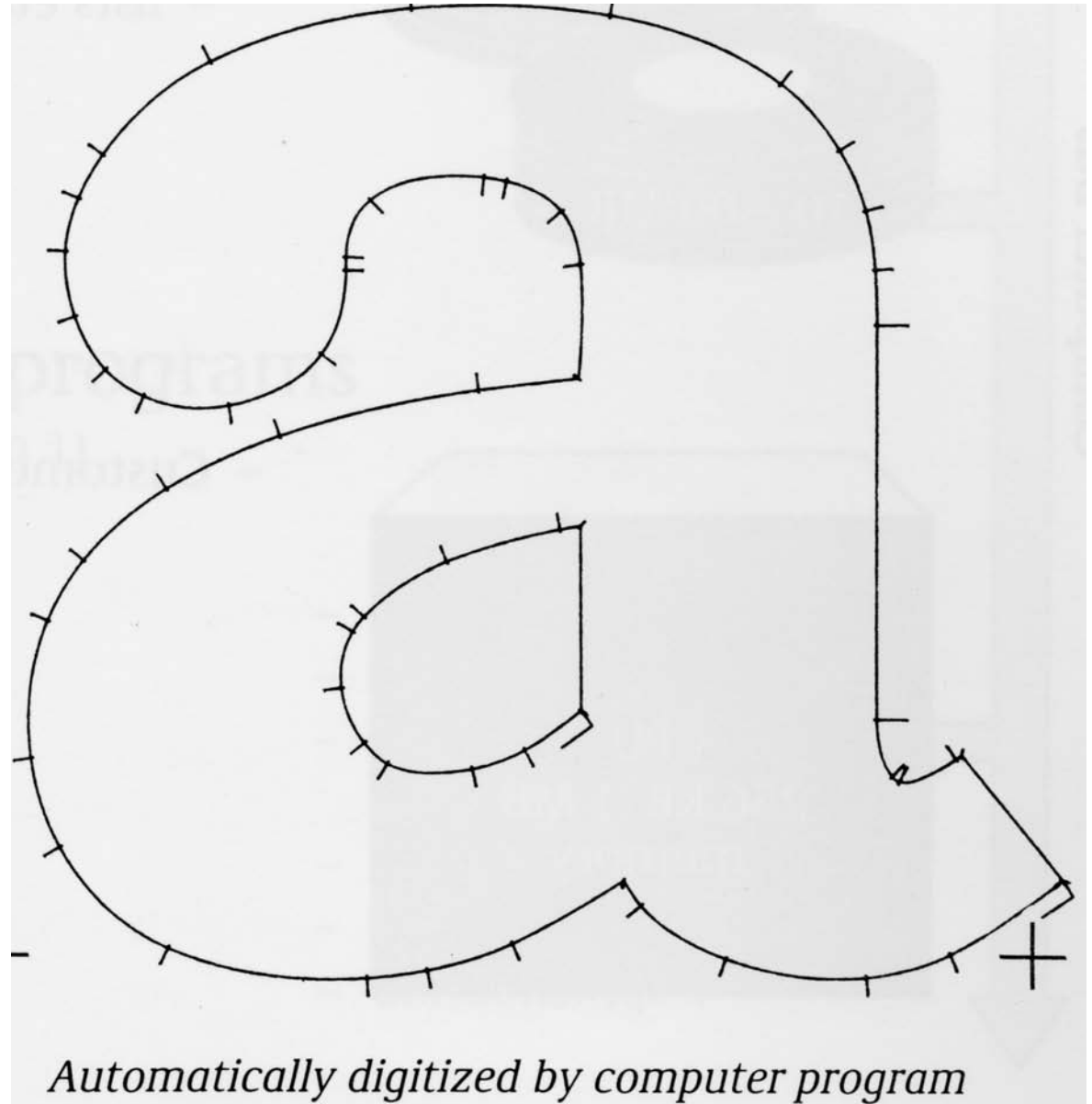
Accents



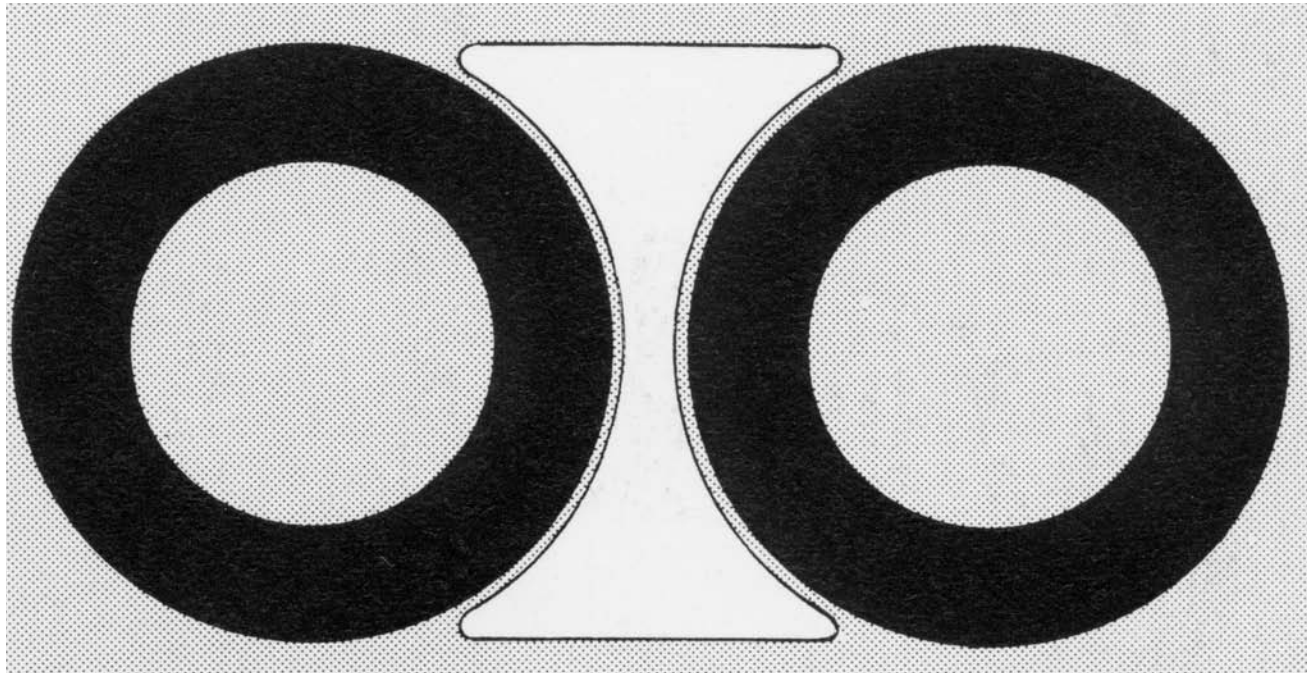
ME - Automatic Digitizing

SC -> IK

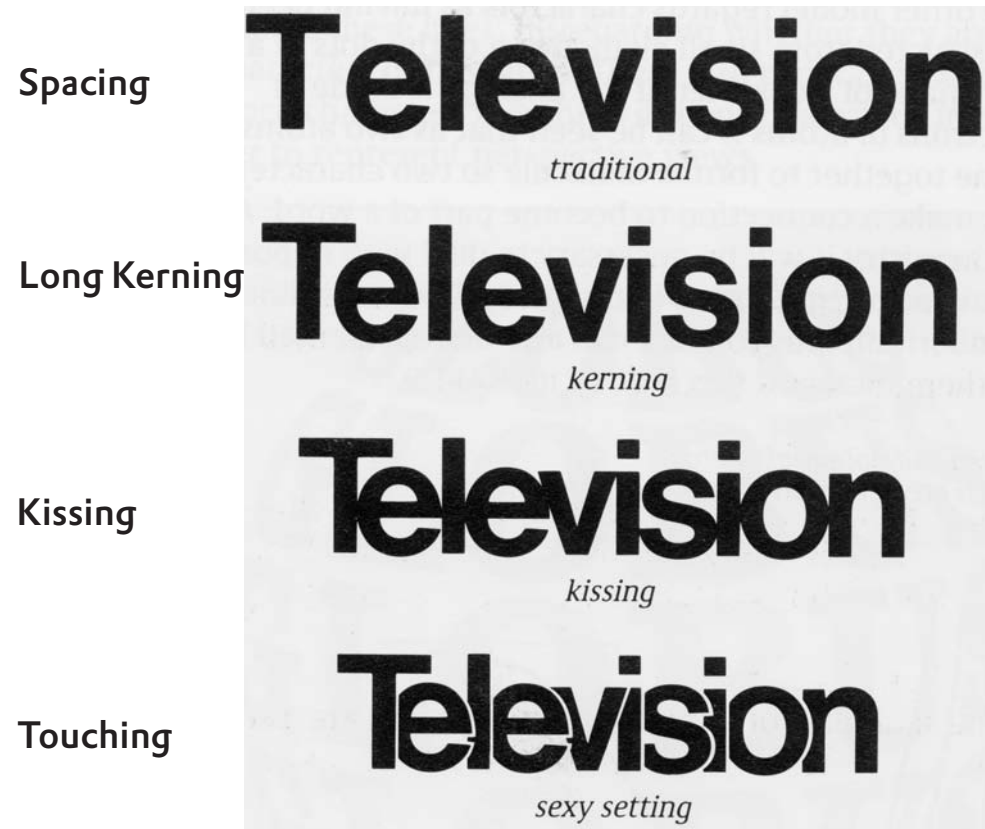
Parameters pre-set, editable



Spacing and Kerning



Kerning



Re-Inventing Technology
Peter Rosenfeld



Résumé

30 years of experience
extremely powerful
available in DTL FontMaster



Frank Blokland